



Everbridge Control Center

Integrate control of your physical assets.

For many organizations, managing safety and security can be a daunting task.

- Threats are increasing.
- Risks are becoming more diverse.

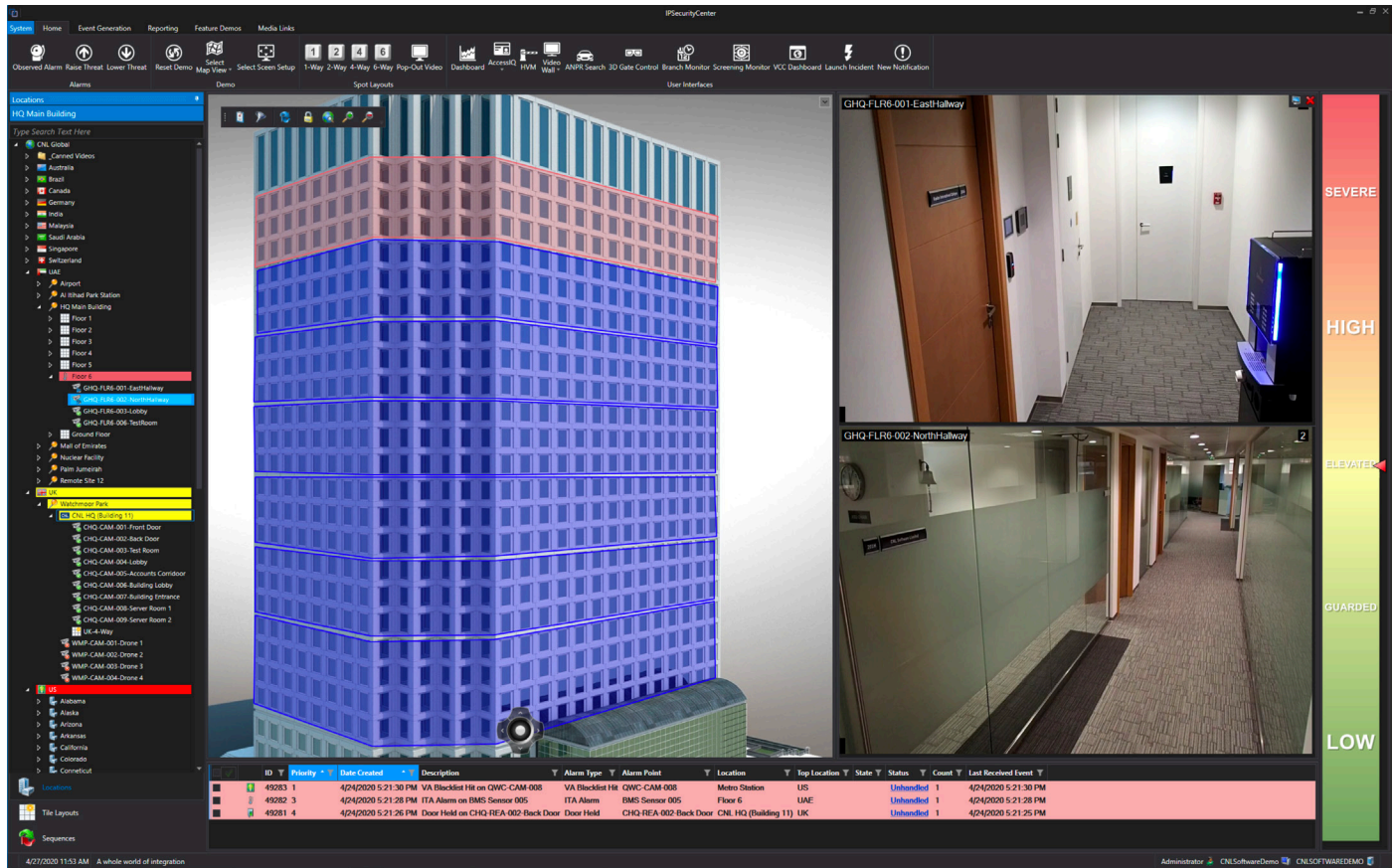
Operations also continue to grow, involving:

- More systems,
- More data, and
- Many more users.

All of this can be difficult to manage, and costly to control. Making sense of all your information is hard enough during normal operations. When a critical event unfolds and information floods into your organization, it can be overwhelming. You need to get the right information to the right people at the right time to protect your people and facilities and ensure operational continuity.

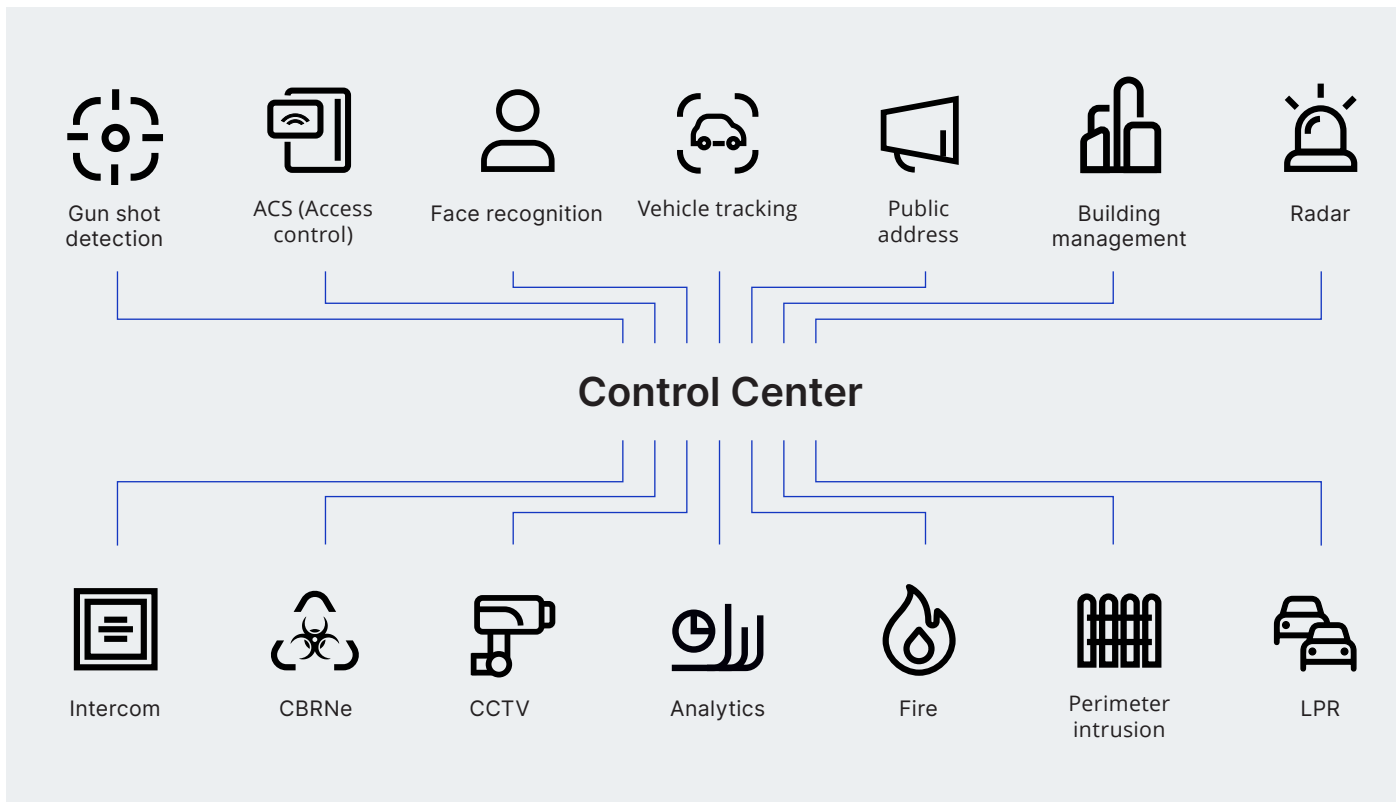
Maintaining operational control

Control Center correlates events from disparate safety and security systems into a common operating picture to focus people’s attention on what really matters. The platform provides users with actionable alerts, next step actions, and automated reporting to better manage risks, ensure compliance with operating procedures and support your business continuity. Automated workflows ensure rapid, consistent responses, reducing the risk of human error. It also facilitates device activation to ensure you are always in operational control and protecting your people. Dynamic reports and dashboards provide real-time actionable insights for your operations teams and senior executives.



Integrating systems, devices and sensors

Control Center integrates a variety of safety and security technologies to provide the holistic common operating picture:



Critical event management integration

Control Center integrates seamlessly with the wider Everbridge CEM platform. Integration with Mass Notification and Incident Communications extends your on-premise solution to communicate with relevant people such as employees, visitors, residents or citizens. Critical information can be distributed in a timely manner, and any feedback is automatically received back to factor into the workflow for any situation. Control Center also broadens the scope of your CEM capabilities, by enabling the on-premise data from your various systems to create hyper-relevant risk event feeds direct to the Everbridge CEM orchestration engine.

With Control Center, your organization can be safe, secure, and in operational control, now and in the future.



About Everbridge

Everbridge, Inc. (NASDAQ: EVBG) empowers enterprises and government organizations to anticipate, mitigate, respond to, and recover stronger from critical events. In today's unpredictable world, resilient organizations minimize impact to people and operations, absorb stress, and return to productivity faster when deploying critical event management (CEM) technology. Everbridge digitizes organizational resilience by combining intelligent automation with the industry's most comprehensive risk data to Keep People Safe and Organizations Running™.

For more information, visit [Everbridge.com](https://www.everbridge.com), read the company [blog](#), and follow us on [LinkedIn](#) and [Twitter](#).

[Get in touch](#) to learn about Everbridge, empowering resilience.

