



Everbridge High Velocity Critical Event Management™

Everbridge delivers a business resilience advantage with High Velocity CEM, powered by Purpose-built AI, protecting organizations from the impact of critical events.

By combining market-leading innovation, decision-ready risk intelligence, and full lifecycle automation, only Everbridge helps organizations know earlier, respond faster, and improve continuously, amidst the increasing frequency and volume of critical events. More than 6,500 customers worldwide rely on Everbridge to keep their people safe and their organization running.

The diagram illustrates the High Velocity Critical Event Management (CEM) process. A man in a dark blue shirt is shown in the foreground, looking at a tablet. Behind him is a large tablet displaying the Everbridge Visual Command Center interface. Above the tablet, a circular flow diagram shows the CEM process: Plan (document icon), Monitor (gears icon), Alert (bell icon), Respond (gears with arrow icon), and Improve (checkmark icon). The Visual Command Center interface shows an 'Active Alert: Tropical Storm' with details for Tropical Storm HAROLD-23, including a wind speed of 55.6 km/h and a projected 6 hours from now. A map shows the storm's path over the Caribbean. A 'Severe' alert level is indicated. Below the tablet, a 'Purpose-built AI' icon (a blue circle with white stars) is shown. To the right, a white box highlights 'High Velocity CEM' with a list of features: Full Lifecycle Automation, Human Guidance, and Risk Intelligence.

Plan Monitor Alert Respond Improve

everbridge Visual Command Center

Active Alert: Tropical Storm

Tropical Storm HAROLD-23 wind speed of 55.6 km/h projected 6 hours from now

Details Assets History

Severe

High Velocity CEM

- Full Lifecycle Automation
- Human Guidance
- Risk Intelligence

Purpose-built AI



The most comprehensive critical event management platform, powering your success

From business continuity planning to threat monitoring and incident response, Everbridge has you covered across the entire critical event management lifecycle for both physical and digital threats. With Everbridge, managing critical events is as easy as 1-2-3: know earlier, respond faster, improve continuously.

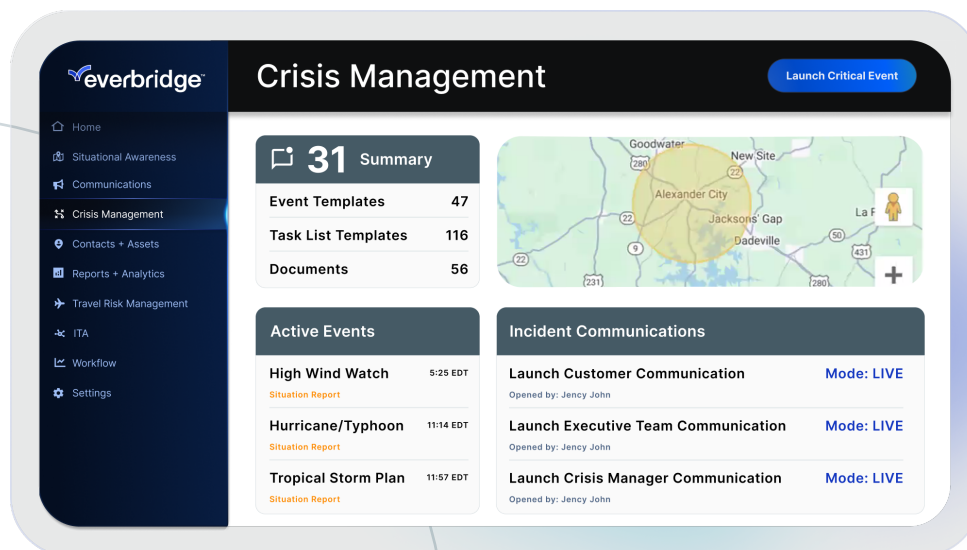
Everbridge 360™

Everbridge 360 integrates advanced communication, real-time risk intelligence, and incident management into one powerful platform. This unified solution streamlines how organizations manage critical events, offering comprehensive oversight. Its two-way mass notification ensures seamless emergency communication with instant updates, real-time feedback, and critical information sharing. This capability is crucial for keeping people safe and operations running smoothly when it matters most. By uniting these powerful tools, organizations can enhance emergency response, minimize communication delays, and ultimately boost both operational efficiency and organizational resilience in the face of any threat.



“Everbridge CEM has transformed how we manage critical events, enabling us to respond faster, ensure our employees’ safety, and maintain seamless operations no matter the challenge.”

- Akamai



[Schedule a demo](#)



BC in the Cloud®

Everbridge BC in the Cloud unites planning, risk management, and response, to strengthen business continuity and disaster recovery while providing flexibility within a low-code platform. With built-in templates and compliance-ready workflows, it streamlines planning, automates processes, maps dependencies, and delivers real-time insights for precise incident response.

Purpose-built for resilience, it empowers organizations to strengthen business continuity and disaster recovery programs, ensuring precise responses across the entire incident lifecycle. From risk assessments to recovery, BC in the Cloud integrates planning, automation, and real-time insights into a streamlined experience.



“BC in the Cloud helps solve the lack of clarity in how organizational processes are defined and their resiliency posture. It helps consolidate and present organizational data through a resiliency lens, driving positive change through data.”

- Thomas B. Senior Business Resilience Manager

The dashboard screenshot shows the following data:

- Enterprise Impact Map:** 19
- Plans Assigned by Department:** 335
- Locations by Type:** 1,214
- Action Items:** 0
- RTO Gaps:** 3
- Users by Role & Status:** (Horizontal bar chart)
- Processes by RTO:** (Horizontal bar chart)

[Schedule a demo](#)



Travel Protector™

Everbridge Travel Protector™ ensures the safety and well-being of employees wherever they travel by providing 360° threat awareness, dynamic travel intelligence, and advanced communication. Travel Protector enables businesses to identify risks, issue pre-trip advisories, and monitor travel plans for VIPs or individuals heading to high-risk destinations. By delivering real-time insights and alerts, it helps organizations proactively address potential dangers, ensuring employees are informed, protected, and supported, no matter where their work takes them. Combined with Everbridge Assist, the Everbridge 24/7 medical & security assistance service, organizations can build comprehensive travel risk management programs that fulfill duty of care requirements, and comply with ISO 31030.



“At Burns & McDonnell, safety is first. With more than 13,500 employees working from 70 offices globally, we are committed to creating safe environments in the office, in the field and while traveling. Everbridge Travel Protector helps keep our teams safe wherever they go.”

- Robert Hope, Director, Burns & McDonnell

The image displays the Everbridge Travel Risk Management (TRM) system across multiple devices. The desktop monitor shows the 'Travel Risk Management' dashboard with an 'Active Alert: Trip Advisory' for a risk event detected in the arriving area. It includes a map of the Atlantic Ocean with travel segments from North America to Europe, a severity level of 'Moderate', and tabs for Details, Assets, and History. The smartphone shows the 'Alerts' section with the same 'Moderate Trip Advisory' and a 'My Apps' section with icons for Comms, Travel, Check-in, Safe Corridor, Office Access, Country Reports, Traveler Guidance, and Traveler Education. A white card in the foreground provides 'Traveler Details' for an employee with ID 978654654, listing airports ORD-Chicago, USA to ORY-Paris, FR, and a 'Pre Trip Advisory' section.

Speak to an expert about our TRM services



Everbridge xMatters empowers DevOps, SREs, and operations teams with automated workflows to ensure reliable infrastructure and application uptime. By streamlining incident management and enabling efficient collaboration, xMatters reduces risks and helps teams resolve issues quickly. With signal intelligence, adaptive incident management, and actionable analytics, it ensures seamless customer experiences and improved operational performance. xMatters also automates workflows to proactively manage issues associated with new releases, reducing the risk of incidents that could impact customers. Its connected, collaborative workflows provide every team with the tools they need to maintain reliability, minimize downtime, and deliver consistent, high-quality service.



“xMatters is the first step to operating globally. It’s the first thing you need to be able to manage your rotation, manage your paging, and manage your teams and operations.”

- Ben Narramore Director of Global Operations, Sony Interactive Entertainment

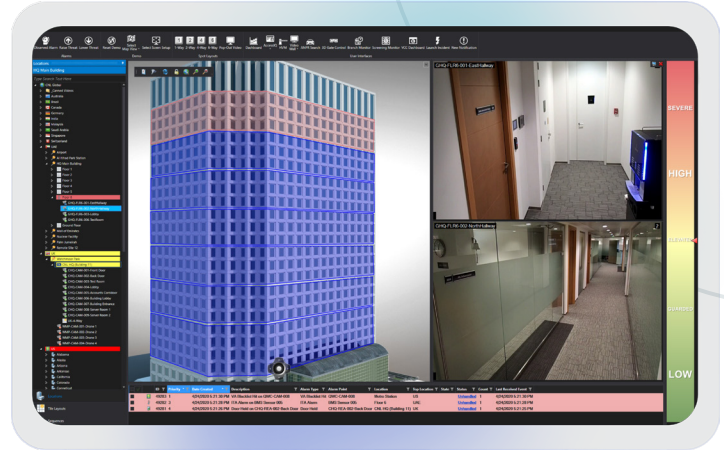
The screenshot shows the xMatters Incident console interface. On the left is a sidebar with navigation options: Dashboard, Incidents, Services, Users, Groups, Reports, Messaging, and Workflows. The main panel is titled 'Incident console' and 'Incidents'. It features a search bar, filters for Status (Open, In Progress), Severity (Show All), Incident Commander (Show All), and Impact. Below these are several incident entries with columns for SEVERITY, STATUS, INCIDENT, and CREATED. The incidents include details like '(SEVERE) Stackdriver - API Availability Threshold ...', 'Datadog [prd-p-53hk4n7nnh5h] [Triggered] CPU ...', '(Critical) AppDynamics - ACME Book Store Applic...', 'Replicant Management: 'password' column not fou...', and '(SEVERE) Stackdriver - API Availability Threshold ...'. On the right, an 'Impacted services' panel shows a list of services with their status (In progress, Open) and associated actions like 'InvOrderConfirm' and 'Web UI'.

Explore the full Everbridge product suite



Control Center

Everbridge Control Center integrates safety and physical security systems into a unified platform, providing real-time situational awareness and operational control. It offers automated workflows, enabling the streamlining of processes, accelerating response times, and ensuring consistency in managing incidents. It provides a common operating picture and delivers a cost-advantage by integrating disparate systems like CCTV, access control, and alarm monitoring, into a single-pane-of-glass for global security operations to protect both people and facilities.



SnapComms

Everbridge SnapComms is a multi-channel internal communication platform designed to inform and engage with employees to help achieve 100% message readership. With unique formats like desktop takeover, tickers, and a large library of designer templates, it boosts employee engagement, delivers urgent notifications, and drives action for leadership updates.



Personal Safety Device

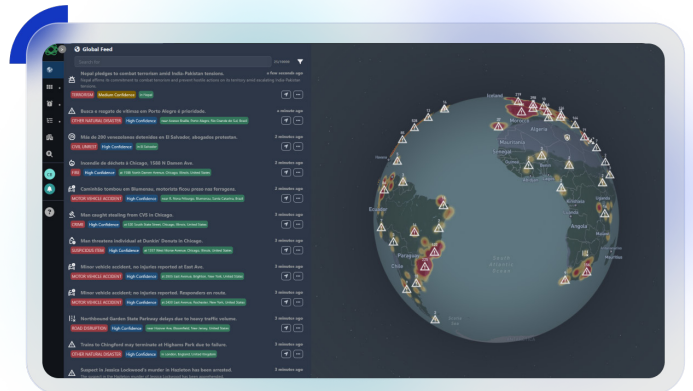
The Personal Safety Device (PSD) enhances on-the-go safety for lone workers or those in higher risk work environments. This compact, wearable device offers rapid response, peace of mind, and real-time protection through alerts, location monitoring, and reliable communication when it's needed most.


RedSky

Everbridge RedSky provides dynamic, cloud-based E911 solutions to protect mobile workforces and ensure compliance with federal regulations like Kari's Law and the Ray Baum Act. RedSky solutions ensure that 911 calls get routed to the correct local Public Safety Answering Point (PSAP) during an emergency to protect employees wherever they are.


Signal

Signal is an AI-powered intelligence platform that tracks global sources, from social media to the dark web. It delivers real-time insights and early warnings to enhance resilience, protect people, ensure security, and safeguard organizational reputation.



Request a demo

Experience what organizational resilience looks like with Everbridge

Here's what to expect:

- Request a demo, and we'll connect with you to tailor the experience to your needs.
- Enjoy a personalized demo with one of our experts.
- Start your resilience journey with a customized program designed just for you.

Request a demo today



The Everbridge advantage

Everbridge offers the most comprehensive, end-to-end suite of solutions for managing both physical and digital critical events. Powered by Purpose-built AI, our High Velocity CEM™ platform delivers industry-leading actionable risk intelligence to help keep your people safe and organizations running.

The results are clear: Forrester Consulting estimates a 358% ROI for Everbridge customers over three years, including \$2 million saved in IT downtime and \$3 million gained in operational efficiency. With instant multi-channel notifications and full lifecycle automation, Everbridge streamlines responses, eliminates delays, and strengthens organizational resilience - all within a seamless, user friendly platform.

A unified platform for greater resiliency in critical event management

Leveraging cutting-edge technology, strategic innovation, and proven reliability, Everbridge empowers you to navigate an ever-changing risk landscape with confidence.



Platform

One platform.
One process.
One response.
Anywhere.



Scale

High Velocity CEM solutions to support teams of all types and sizes, globally.



Data

AI-powered threat scoring and 25,000+ real-time data sources.



Products

AI-powered decision-ready risk intelligence and full lifecycle automation to navigate critical events with confidence.



IP patents

160+ worldwide patents.

Experience the power of Everbridge for yourself

Ready to transform how you manage critical events? Request your personalized demo to see Everbridge in action today. Call us at +1 (888) 366-4911 to speak with a resilience expert, or schedule a demo at everbridge.com/demo

[Schedule a demo](#)

Everbridge delivers a business resilience advantage with High Velocity CEM™, powered by Purpose-built AI and decision-ready intelligence to accelerate response, reduce downtime, and protect what matters most. Request a demo at everbridge.com/demo or call +1 (888) 366-4911.

