

COVID-19 SHIELD

Global Risk Landscape Information to Know Quicker



COVID-19 will be a business risk for the foreseeable future. Not only does the global pandemic continue to create health risks which could disrupt your operations, but there has also been a rise in civil unrest due to various lockdowns and regulations. At the same time, other risks such as hurricanes, wildfires, floods, IT service disruptions and cyberattacks still need to be mitigated. With the Know Your Risks solution package, Everbridge provides you with a real-time risk landscape correlated to the assets you care about with detailed situation reports so you can focus on what is most important to your business.

Common Operating View to Gain Situational Context

In one common operating view, monitor the locations of your assets and people, and the correlating threats they might be exposed to as it relates to COVID-19 and other hazards. Physical assets may include your buildings, partner and customer facilities, infrastructure like mass transit stations, and any other locations of interest. Protect employees, visitors, contractors, and customers whether they are in an office, traveling, or working remotely with real-time alerts and automatically notify stakeholders with risk details and initiate a rapid response.

Everbridge Critical Event Management (CEM) platform is always on – always monitoring for risks around the world, even when your team is not at work or actively observing threats. Using automation, machine learning, and analysts spread across three intelligence centers on two continents, we monitor, filter, curate, and categorize risk events for you from tens of thousands of unique data sources.

COVID-19 Information to Make Data-driven Decisions

In addition to all hazards data, the “Know Your Risks” solution gives you access to the following coronavirus-specific information:

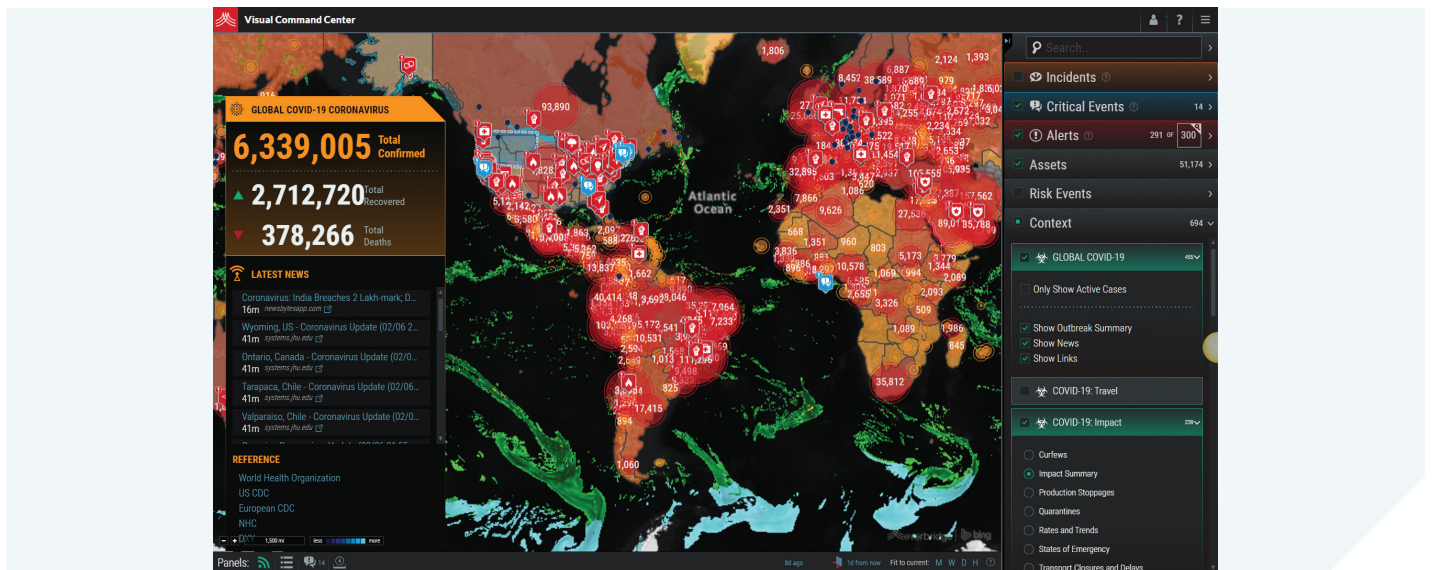
- + COVID-19 Tracker: Visualize the current state of the virus at the country, state/province, and local level; also receive the latest COVID-19-specific news.
- + COVID-19 Travel Restrictions: Rules on inbound and outbound travel for every country.
- + Curfew Information: Guidance on curfews put in place in response to COVID-19.
- + Impact Summary: Guidance on the specific impacts COVID-19 has had in each country.

KEEP YOUR EMPLOYEES, VISITORS AND PEOPLE SAFE

- + Production Stoppages: Guidance on major manufacturing shutdowns in each country.
- + Quarantines: The current quarantine state in each country, with country-specific guidance on when and how to quarantine.
- + Rates and Trends: Shows the increase/decrease in infection rate on a per-country and per-state basis, as well as running 2-week trends.
- + States of Emergency: Shows which countries have declared states of emergency due to COVID-19.
- + Transport Closures and Delays: Guidance on airports, border closures, and other disruptions to travel and transport.

Beyond COVID-19, Keep Sight of Your Complete Global Risk Picture with all Hazards Data

Everbridge's Risk Intelligence Monitoring Center (RIMC) provides the most comprehensive risk information available on the market as it relates to COVID-19 and beyond to include traditional risks such as weather, rising instances of protests, terrorism, crime, and other natural disasters like hurricanes and wildfires for a holistic risk picture. RIMC operates 24x7x365, processes content in over 100 languages, and leverages tens of thousands of verified global sources to provide customers accurate, relevant information as quickly as possible to help keep your people safe and operations running.



Let's Chat

Do you have questions? Would you like to know more about Critical Event Management? **Get in touch or just call us at +1-818-230-9700 to learn more.**

ABOUT EVERBRIDGE

Everbridge, Inc. (NASDAQ: EVBG) is the global leader in critical event management and enterprise safety software applications that automate and accelerate an organization's operational response to critical events in order to keep people safe and businesses running. Everbridge is based in Boston and Los Angeles with additional offices in Lansing, San Francisco, Beijing, Kolkata, London, Oslo, Singapore, and Stockholm.



DS_COVID-19 SHIELD_RISKS 06.08.20

VISIT WWW.EVERBRIDGE.COM

CALL +1-818-230-9700