

COVID-19 SHIELD

Return to Work, Contact Tracing and Beyond



The COVID-19 pandemic continues to cause unprecedented challenges for agencies. Hundreds of millions of people are still working from home due to nationwide lockdowns and returning to work has its own set of unique security risks. Now more than ever, it's important to understand the needs of employees, carefully coordinate their return to the workspace, and reestablish pre-crisis levels of safety and operations with risk assessment and contact tracing, all through a single pane of glass.

Know your Risk Landscape

As employees return to work, COVID-19 remains a constant presence with new outbreaks every day, not to mention other disruptions, natural or man-made, which can also impact operations.

Stay ahead of all potential risk developments with visual, real-time, hyper- local, rich, contextualized data on:

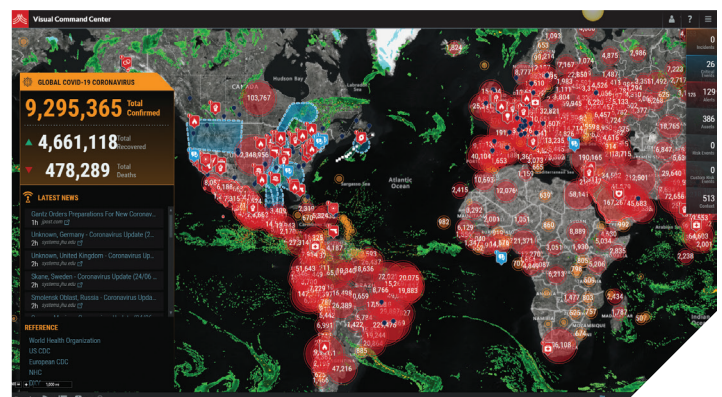
- + New COVID-19 outbreaks
- + COVID-19 declared quarantines
- + Travel restrictions and bans
- + Severe weather and natural disasters
- + Civil unrest, protests
- + Geo-political events
- + Local regulations and restrictions (PPE, etc...)

Quickly understand the possible impact on your employees, visitors, suppliers, supply chain routes, and customers, as well as employees' and executives' travel plans.

Keep Your Employees, Visitors and People Safe

You want to maintain a strong link with your people, wherever they are, and share with them what's important:

- + Survey employees to assess their health and needs
- + Conduct regular wellness checks
- + Determine employee's readiness for returning to work
- + Notify specific employees with rich, relevant, hyper-local information
- + Provide access to your employee resource repository



KEEP YOUR EMPLOYEES, VISITORS AND PEOPLE SAFE

Leverage End-to-end Contact Tracing

Reach out to your people, anywhere they might be at any point in time, with end-to-end Contact Tracing capabilities which includes current, past and expected locations, potential exposure, and follow-up management. Should they be:

- + In your agency's facilities and buildings (via integration with building access system, Wi-Fi hot spots, facility security equipment, and more)
- + Moving between buildings or campuses
- + Working remotely via GPS localization or self check-in
- + Traveling (via integration with your travel itinerary systems)

Capturing location data from different sources in addition to proximity data, while fully adhering to privacy regulations and restrictions, constitutes the richest information that helps you understand the potential exposure of your employees and therefore take appropriate actions.

Recover Your Operations

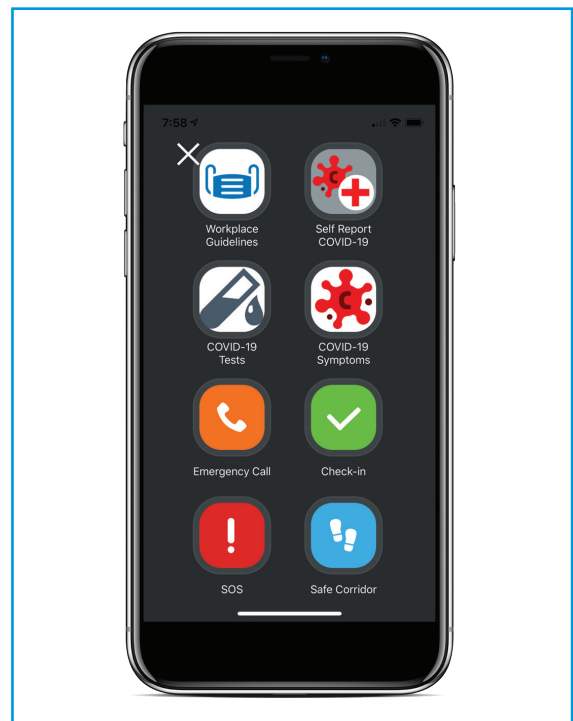
Everbridge's purpose-built solution helps you navigate and manage the multiple dimensions of the recovery. The solution helps automate flexible task lists and workflows based on phased approach to returning to work safely.

In the event of new COVID-19 cases, the solution can rapidly identify people who may have been in contact with the infected person, and can communicate specific, confidential instructions to contain the spread and keep other employees safe and healthy. Leveraging Location History, the solution identifies possible past exposure when people were asymptomatic.

Flexible Workflows Because Every Agency is Different

Because clear, concise, and centralized information is paramount to keeping your employees safe and your operations running, the Everbridge mobile app offers custom widgets which can easily be configured so that employees get the following at their fingertips:

- + Be directed to a repository with your agency's important news and resources related to COVID-19
- + Access their country's department of health symptom checker form
- + Self-report COVID-19 symptoms or infection
- + Receive information on the closest testing locations



Let's Chat

Do you have questions? Would you like to know more about Critical Event Management? **Get in touch or just call us at +1-818-230-9700 to learn more.**

ABOUT EVERBRIDGE

Everbridge, Inc. (NASDAQ: EVBG) is the global leader in critical event management and enterprise safety software applications that automate and accelerate an organization's operational response to critical events in order to keep people safe and businesses running. Everbridge is based in Boston and Los Angeles with additional offices in Lansing, San Francisco, Beijing, Kolkata, London, Oslo, Singapore, and Stockholm.



DS_COVID-19 SHIELD_FEDERAL_06.24.20

VISIT WWW.EVERBRIDGE.COM

CALL +1-818-230-9700