

# Everbridge Crisis Management Solution for Transportation

## Providing Transportation Organizations a Single Solution for Crisis Management and Business Continuity



Transportation organizations manage critical events every day which impact their employees, tenants, passengers, equipment, and facilities. Everbridge Crisis Management Solution provides transportation organizations a single solution for business continuity, disaster recovery and emergency communication. In one application, crisis teams can coordinate all response activities, teams and resources to accelerate recovery times and maintain command and control when crises evolve into unanticipated scenarios.

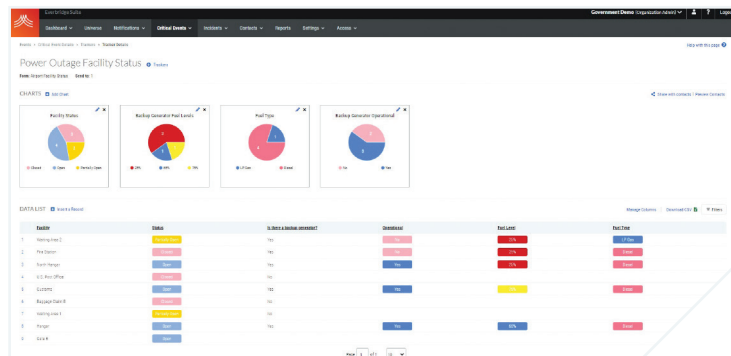
With all stakeholders – from responders in the field to management – working from a common operating picture, you will never have to worry that your response plans are not getting executed or tear yourself away from mission critical activities to provide a status update.

Fully integrated with the Everbridge Critical Event Management Platform, Crisis Management

Solution employs Everbridge's best-in-class technology for mass notification, incident management and mobile collaboration.

## Command and Control

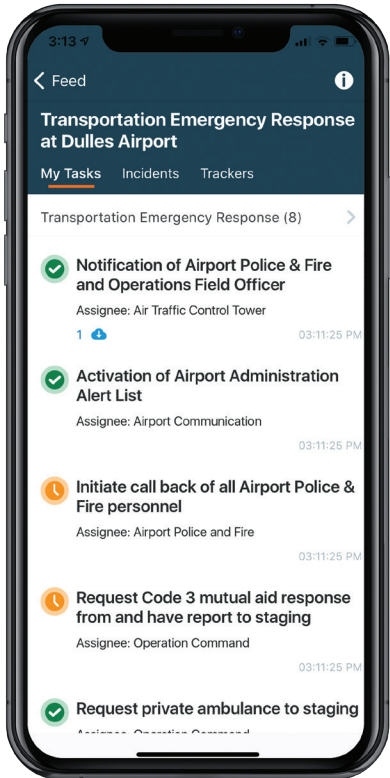
- + Fast response by activating prepared templates and SOPs
- + Dashboard provides full visibility and real-time insight into incident status
- + Track incident/accident reports, claims management, survey & asset status tracking, resource requests, and other configurable workflows
- + Impact tracker quickly helps you assess the situation and initiate the appropriate response actions and tasks
- + Communicate updates to employees, key stakeholders, and management
- + Manage the SITREP with history and automation



VISIT [WWW.EVERBRIDGE.COM](http://WWW.EVERBRIDGE.COM)  
CALL +1-818-230-9700

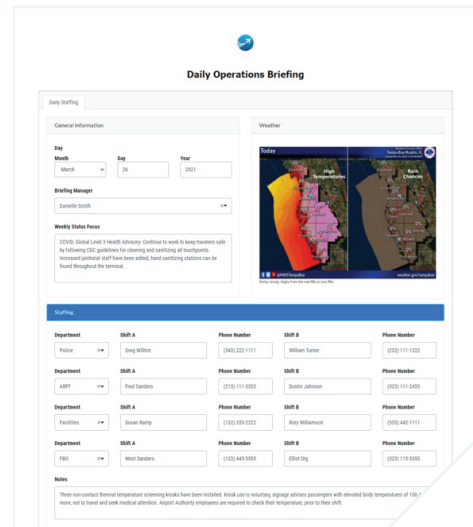
## Your Response Plans on the Go

- + Mobilize response teams and assign tasks on the mobile device
- + Execute and manage plans (All Hazards – Natural [i.e. hurricane, blizzard], hazardous material spills, fires, jobsite accidents)
- + Collaborate with team members no matter device or where they are located
- + Full support for online and offline plan documents



## Ready-to-Use Intelligent Forms and Workflows

- + Supports simple & complex forms
- + Current forms can be uploaded and downloaded
- + Supports auto population, conditional logic, and PDF forms
- + Customizable for ICS workflow forms
- + Supports everyday operational forms (e.g. daily operational briefs)
- + Configurable and shareable forms library
- + Report history available
- + Lockable reports to avoid changes
- + Variety of applications of forms for survey, incident, reports



## Let's Chat

Do you have questions? Would you like to know more about Critical Event Management? [Get in touch](#) or just call us at +1-818-230-9700 to learn more.

### ABOUT EVERBRIDGE

Everbridge, Inc. (NASDAQ: EVBG) is the global leader in critical event management and enterprise safety software applications that automate and accelerate an organization's operational response to critical events in order to keep people safe and businesses running. Everbridge is based in Boston and Los Angeles with additional offices around the globe including Auckland, Bangalore, Beijing, Kolkata, Hong Kong, Lansing, London, Malaysia, Oslo, San Francisco, Singapore, and Stockholm.



VISIT [WWW.EVERBRIDGE.COM](http://WWW.EVERBRIDGE.COM)  
CALL +1-818-230-9700