

# IPAWS with Everbridge

## Send Alerts. Inform the Public. Save Lives.



### Get The Word Out When Seconds Count

Sending public alerts through multiple pathways is critical for federal, state, and local governments. During a major storm, national emergency, or another major incident, public authorities need to deliver one message to as many people as possible to save lives.

FEMA's Integrated Public Alert & Warning System (IPAWS) is a national system for local alerting that provides local, authenticated life-saving information to the public through multiple channels.

IPAWS with Everbridge enables approved authorities to send geotargeted warnings and alerts to the public through one single interface across mobile, TV, radio, and public feeds.

*"We improved our drill alert systems significantly by switching to Everbridge. As a result, we improved our alert efficiencies and timeliness, saved on labor costs, and met state and federal alert response time requirements."*

**- Jodi Budde, Chisago County, Minnesota**

### SEND MESSAGES THROUGH PUBLIC ALERTING SYSTEMS

- + **Wireless Emergency Alerts (WEA)** – send a short text message to mobile phones and activate cellular towers in that geo-targeted area.
- + **Emergency Alert System (EAS)** – send a short text message to televisions and audio transmission to radio stations.
- + **Non-Weather Emergency Message (NWEM)** – send short audio messages to NOAA Radio
- + **Collaborative Operating Group (COG-to-COG)** – send messages to other alerting authorities who have access to IPAWS
- + **Internet-based Services:** redistribute alerts through several technologies supporting Common Alerting Protocol (CAP), including sirens and digital signage.



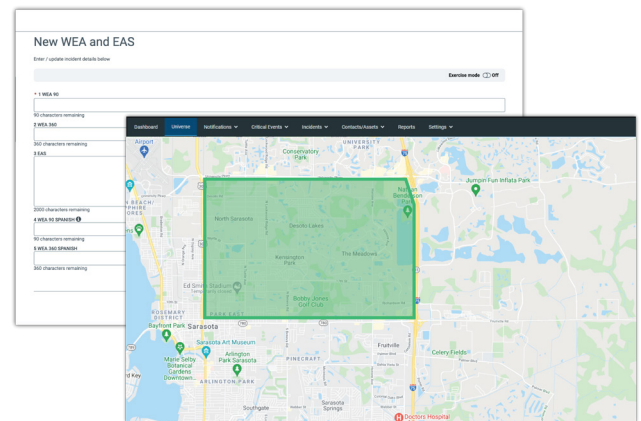
Trusted by thousands of agencies and public authorities, Everbridge is one of the select few who has successfully demonstrated IPAWS capabilities, including WEA 2.0/3.0.



## EASE OF USE, EVEN IN EMERGENCY SITUATIONS

When an emergency alert or warning needs to go out, emergency personnel are under pressure to get it right - right now. With IPAWS with Everbridge critical features are included to avoid the chance of any false alarms.

- + Distinct Test and Live mode environments for sending messages via EAS or WEA.
- + Access controls so the administrator can establish exactly who has permission to send messages.
- + Two-factor authentication with the user login and Private Key with Keystore Password or established PIN.
- + Verified connection to IPAWS test and live networks.
- + Simple FEMA compliant form to focus on only the most critical information.
- + Streamlined steps to rapidly select a targeted area by pre-loaded polygons or defining areas or circles.
- + "Follow Up" option enables customers to update or even cancel IPAWS-initiated alerts.



**Publishing Options**

Publishing Channel: ☐ Everbridge Network

CAP Channel: ☒ Wireless Emergency Alerts (WEA) ☒ Emergency Alert System (EAS) ☒ Non-Weather Emergency Messages (NWEM) ☒ CDS to CDS (CAPSICH)

~ CAP CHANNELS (WEA, EAS, NWEM, CAPSICH)

**Test** **Live** Test Mode: This message will only be sent to the IPAWS test environment.  Status: Available

\* PIN  Enter IPAWS credentials

**CAP Fields**

	WEA	EAS	NWEM	CAPSICH
*Message Status	Actual	*	*	*
*Source		*	*	*
*Scope	Public	*	*	*
Restriction				*
Addresses				*
*Message Category	Public Safety	*	*	*
*Event Name	Select...	*	*	*

## GAIN A TRUSTED PARTNER

For 20 years, Everbridge has been a trusted partner to governments around the world. From natural disasters like fires or floods to man-made ones such as terror attacks; we've been here successfully monitoring potential hazards, preparing and responding to incidents, and communicating in ways that reach most people with the right information to keep them informed and safe. When you partner with Everbridge, benefit from:

- + Trusted by the FEMA IPAWS Customer Support Center to send live public IPAWS alerts on behalf of state and local governments.
- + Free, always-available access to Everbridge University including courses and certification for IPAWS with Everbridge system users and administrators.
- + Live customer support 24/7.



### Let's Chat

Do you have questions? Would you like to know more about Critical Event Management?

**Get in touch or just call us at  
+1-818-230-9700 to learn more.**

### ABOUT EVERBRIDGE

Everbridge, Inc. (NASDAQ: EVBG) is the global leader in critical event management and enterprise safety software applications that automate and accelerate an organization's operational response to critical events in order to keep people safe and businesses running. Everbridge is based in Boston and Los Angeles with additional offices in Lansing, San Francisco, Beijing, Kolkata, London, Oslo, Singapore, and Stockholm.



**VISIT** [WWW.EVERBRIDGE.COM](http://WWW.EVERBRIDGE.COM)  
**CALL** +31 (0)13 532 1001 (Netherlands)