

# Everbridge for State and Local Government

Reliably Reach Residents. Coordinate Responders and Employees.

## WHEN CRITICAL EVENTS PUT RESIDENTS IN DANGER...



## ...GOVERNMENT AGENCIES AND MUNICIPALITIES RELY ON EVERBRIDGE.

Reach and engage the community, establish situational intelligence, facilitate information sharing, and coordinate response and recovery efforts. Draw virtual boundaries around a critical event using GPS data to trigger automated notifications and alerts when a device enters that particular area. Integrate special needs registry data to message vulnerable populations. Get timely access to critical information from trusted sources through the Everbridge Network and risk intelligence data.

Everbridge is trusted by 5,600 customers around the world. Offering unparalleled reliability, with 5 billion messages sent in 2020, Everbridge goes beyond emergency messaging to provide a critical event management platform allowing emergency responders and safety professionals to manage the entire lifecycle of an incident. Our mission is keeping people safe.

## Everbridge can meet the Public Safety Challenges of Your Agency or Department



### MASS NOTIFICATION

Quickly and easily send emergency notifications to individuals, groups or geo-targeted locations to keep them informed before, during and after a critical event. Pre-configured templates ensure that the right processes are followed for repeatable incidents.



### RESIDENT CONNECTION

Verified mobile, landline and VoIP telephone records. Reach up to 80% of US households and 90% of US businesses with the Resident Connection contact database. Expand your emergency communication outreach beyond opt-in data and communicate with the whole community.



VISIT [WWW.EVERBRIDGE.COM](http://WWW.EVERBRIDGE.COM)  
CALL +1-818-230-9700



## COMMUNITY ENGAGEMENT

Easy text opt-in to keywords and zip codes, improve and simplify communications with resident, tourists and transient populations for special events, traffic incidents and severe weather.



## CONTROL CENTER

Correlate events from disparate safety and security systems into a common operating picture. Get actionable alerts, next step actions, and automated reporting to better manage risks, ensure compliance with operating procedures and support your business continuity.



## IT ALERTING

Deliver an orchestrated modern incident response solution to help ensure uninterrupted services and continued value to your customer. Through actionable notifications and activities to key targeted personnel, IT Operations accelerates a faster mean time to resolution.



## SMART WEATHER

Enhance and optimize over 150 severe weather alerts including hurricanes, tornados, thunderstorms, hail, ice, snow, extreme temperatures, high winds, flash floods and flooding.



### Let's Chat

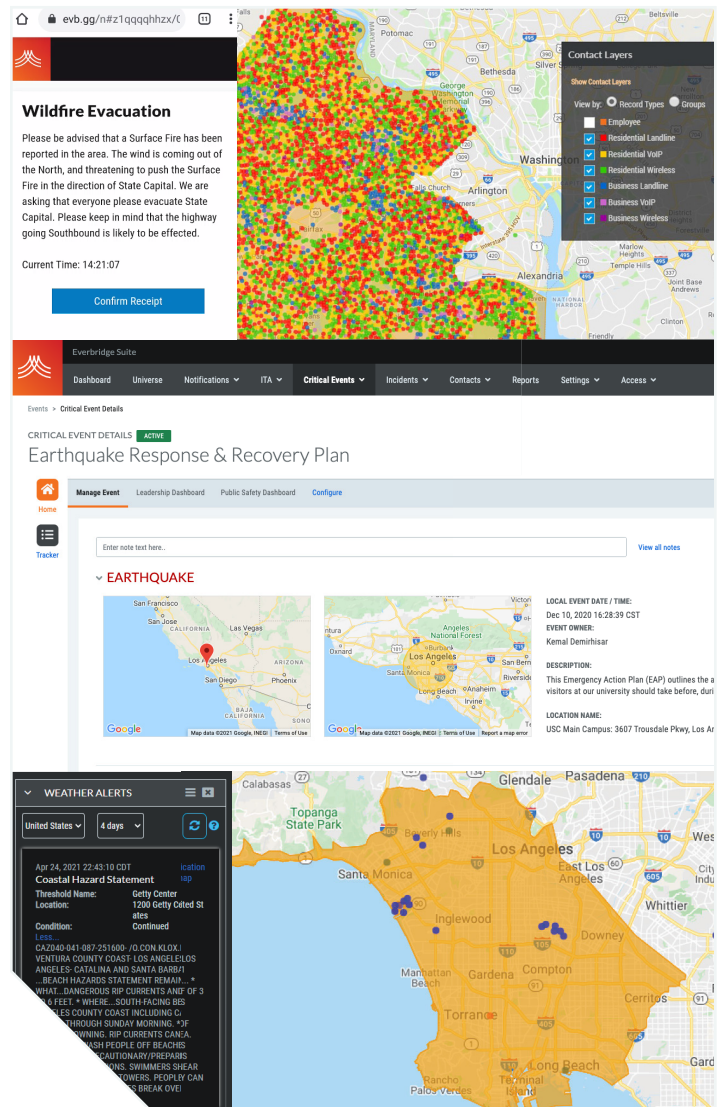
Do you have questions? Would you like to know more about Critical Event Management?

**Get in touch or just call us at**  
**+1-818-230-9700 to learn more.**



## ENGAGE

Desktop alerting, newsletters and screensavers. High impact, visual communication tools that bypass email and reach every responder, wherever they are, whatever device they're on.



### ABOUT EVERBRIDGE

Everbridge, Inc. (NASDAQ: EVBG) is the global leader in critical event management and enterprise safety software applications that automate and accelerate an organization's operational response to critical events in order to keep people safe and businesses running. Everbridge is based in Boston and Los Angeles with additional offices in Lansing, San Francisco, Beijing, Kolkata, London, Oslo, Singapore, and Stockholm.