

Everbridge Visual Command Center for Critical Event Management



Ensure Life Safety



Enable Business Continuity



Protect your Supply Chain

The key to achieving these missions is a common operating picture.

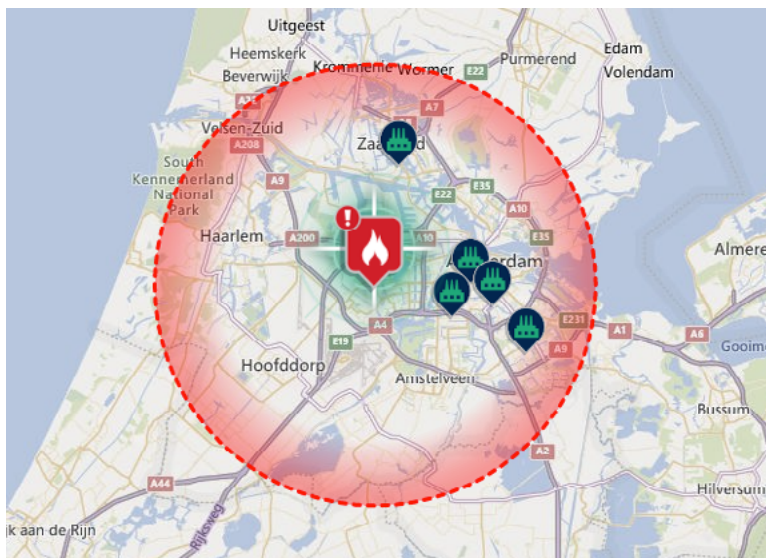
Visual Command Center provides one platform where security and business continuity teams can identify relevant risks, gain context around each risk to understand its importance, identify all assets that could be affected, and act to avoid or mitigate the impact of a risk event. Whether you have a Security Operations Center, a distributed team of security and risk managers, or both, a common operating picture will enable your teams to protect your interests when faced with a critical event.

Eliminate noise and identify relevant risks quickly.

One of the greatest challenges to critical event management is weeding through risk event information to identify credible threats. Using a common operating environment that tracks both assets and risk events geospatially, Visual Command Center helps cut through the noise made by multiple, unrelated risk sources.

Determine the risk sources you want to track from our extensive list. Identify the assets you want to monitor. Receive an alert when a risk is detected near your assets. Visual Command Center records all reported risk events but alerts you only to relevant risks.





Simonskerkestraat & Tussen Meer - There are reports of a large structure fire in the area.

Published Time
Mon, Sep 30, 2019 at 2:21 AM

Event Start
Mon, Sep 30, 2019 at 2:21 AM

Severity
Moderate

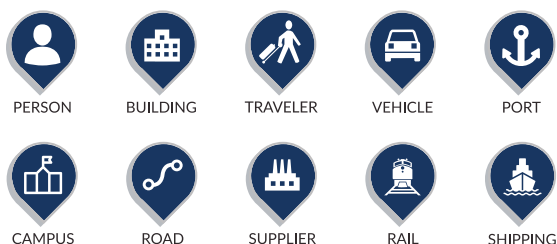
Category
HAZMAT/Fire

Summary
Unconfirmed sources are reporting a large fire in a structure near Simonskerkestraat and Tussen Meer. No injuries were immediately reported.

Source
RIMC Powered by NC4

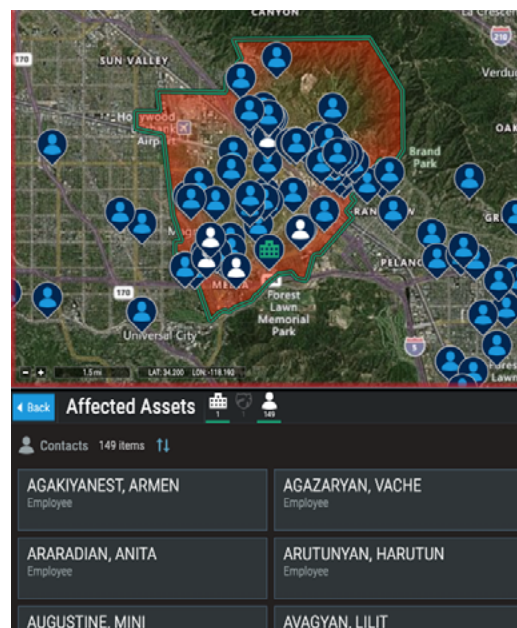
Focus on risk events that are relevant to your assets.

Understand who and what is at risk and who can respond.



Depending on your business, your organization may need to be aware of risk to some or all of these types of assets. Visual Command Center features the industry-leading ability to define assets that are points, lines, or polygons, as well as support for moving assets (like travelers) and temporary assets (like a board meeting or sporting event). You can also see the locations of responders.

Gain understanding of who and what is at risk and who can help instantly – the moment you select an alert to see details, you are presented with asset and responder information.



Gain context for any risk situation.

Risk events don't happen in a vacuum. The area and conditions in which an event occurs can affect the event and your response.



TRAFFIC



WEATHER



CAMERAS



SOCIAL MEDIA



NIXLE ADVISORY



MAP IMAGERY



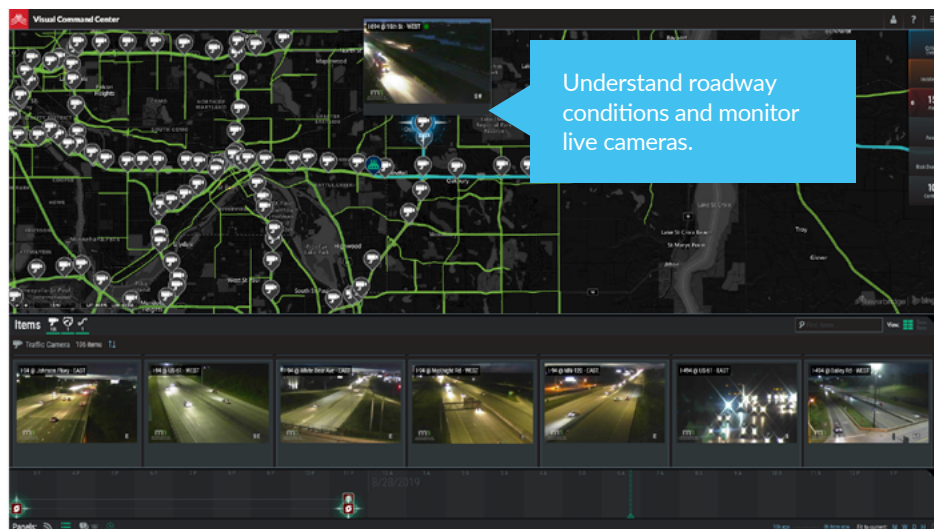
AIRPORTS



COUNTRY RISK PROFILE

Gain insight into current weather conditions, traffic flow and traffic cameras, posts to social media, and the location of local police, fire, and hospitals while you respond. Identify evacuation routes, shelters, and utilities.

Everbridge offers dozens of contextual data layers that can help you shape an appropriate response based on real-time conditions. You can also incorporate your own contextual information by importing map layers from other sources.

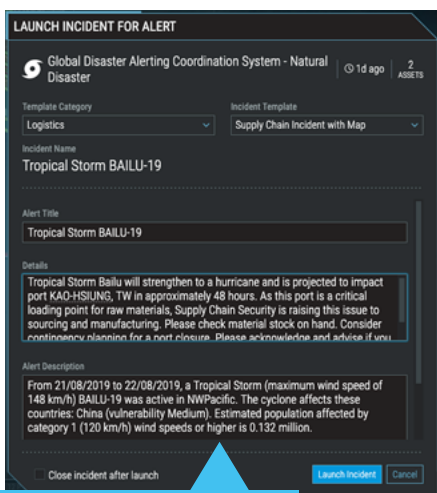


Take action to protect your interests.

Once you understand the event, the potential impact, and relevant context, you can take action. Communicate with persons at risk, responders, stakeholders, and those with a need to know using pre-defined communications plans or ad hoc messaging.

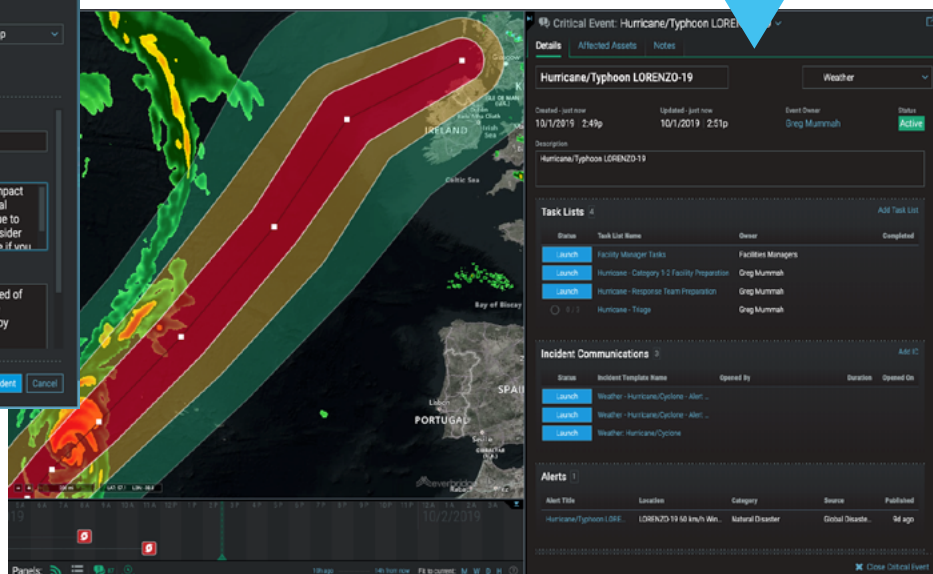
Initiate crisis management plans and instruct individuals and teams on what they need to do. Provide mobile task lists and supporting documentation. Update stakeholders using dashboards, situation reports, and targeted communications.

Orchestrate and automate your response with Visual Command Center.



Communicate risk information with your organization, customers, and partners.

Push tasks and plans to people who need to take action.



Easily integrate external and internal data.

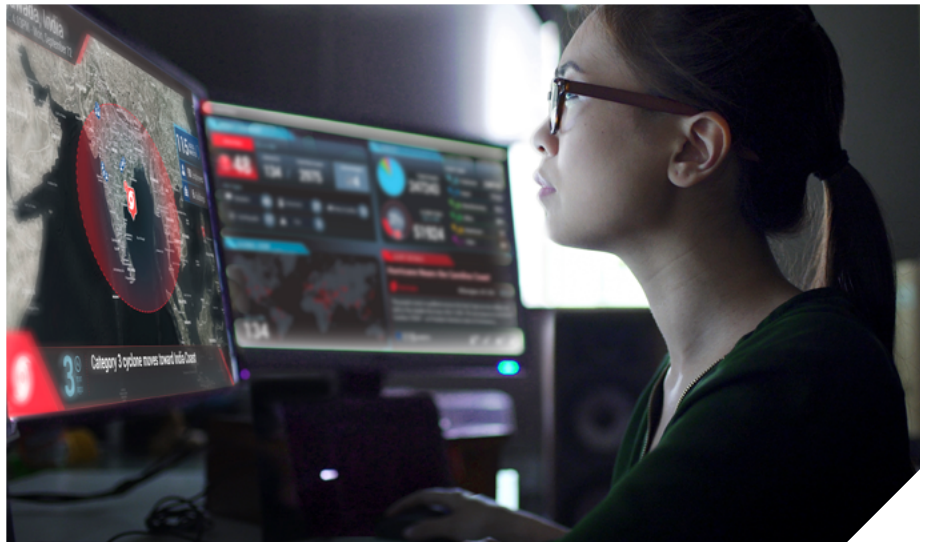
A common operating picture would not be complete without the data that is unique to your organization. Everbridge enables you to incorporate risk event data into Visual Command Center that's relevant to your organization:

- Access control alarms and data to alert you of access violations
- Traveler itinerary data to monitor traveler safety
- Risk event data from third party or internal sources you rely on
- Map layers and data built to the Google KML standard

Secure, scalable, and highly available.

Visual Command Center is part of the Everbridge Critical Event Management Platform, a global SaaS solution that helps customers keep people safe and businesses running. Some of the benefits customers enjoy include:

- No on-premise infrastructure or servers to support and maintain.
- ISO 27001, SOC2 and GDPR-compliant, adhering to the highest security and privacy regulations applicable to global software solutions.
- Scalable to hundreds of thousands of assets and millions of contacts per customer. Grow with your organization without worrying about limits.



Let's Chat

Do you have questions? Would you like to know more about Visual Command Center? **Get in touch or just call us at +1-818-230-9700 to learn more.**

ABOUT EVERBRIDGE

Everbridge, Inc. (NASDAQ: EVBG) is the global leader in critical event management and enterprise safety software applications that automate and accelerate an organization's operational response to critical events in order to keep people safe and businesses running. Everbridge is based in Boston and Los Angeles with additional offices in Lansing, San Francisco, Beijing, Kolkata, London, Oslo, Singapore, and Stockholm.



DS_Data_Sheet_MO.DATE.YR

VISIT WWW.EVERBRIDGE.COM

CALL +1-818-230-9700