

# Joint Analytic Real-Time Virtual Information Sharing System (JARVISS)



Powered by  
the Everbridge  
Risk Intelligence  
Monitoring Center

**Always Ready. Always Alert.**



**Common  
Operating Picture**



**Real-Time Situational  
Awareness and  
Information Sharing**



**Threat Assessment  
and Analysis**

## The key to achieving these missions is a common operating picture.

JARVISS, powered by the Everbridge Risk Intelligence Monitoring Center, provides one platform where senior leaders, antiterrorism officers, law enforcement personnel, and emergency managers can identify relevant threats, gain context around each threat to understand its importance, identify all assets that could be affected, and act to avoid or mitigate the impact of a risk event.

## Eliminate noise and identify relevant risks quickly.

One of the greatest challenges to real-time situational awareness and information sharing is weeding through incident event information to identify credible threats. Using a common operating environment that tracks both assets and threat events geospatially, JARVISS helps cut through the noise made by multiple, unrelated incident types.

Determine the incident types you want to track from our extensive list. Identify the assets you want to monitor. Receive an alert when an incident is detected near your assets. JARVISS records all reported incidents but alerts you only to relevant incidents.



TERROR



PUBLIC  
CRISES



WILDFIRES



ACTIVISM



HURRICANE



OUTBREAK



TORNADO



DRUG  
INTERDICTION



WINTER  
INCIDENT



SYSTEM  
WARNING



TWITTER  
INCIDENT



FLOOD



CLINICAL  
DISCHARGE



SUPPLY  
CHAIN



IT OUTAGE



FIRE



CYBER



GANGS



FOOD & DRUG  
INCIDENT



AVIATION  
INCIDENT



AMBER  
ALERT



BORDER  
SECURITY



IT TICKET



HUMAN  
TRAFFICKING



EARTHQUAKE  
/AFTERSHOCK



HAZMAT



VOLCANO



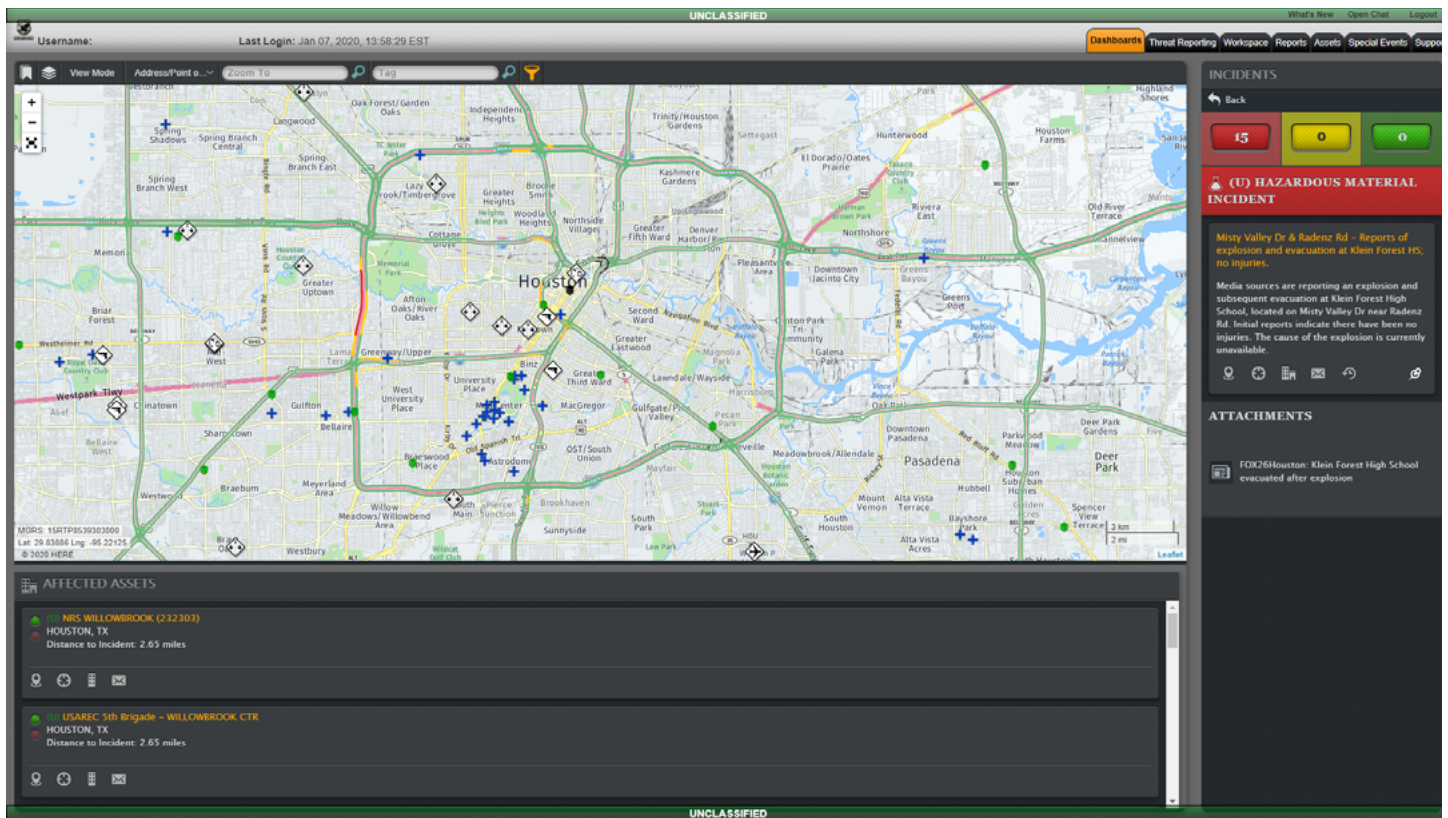
PRODUCT  
RECALL



DS\_JARVISS\_2020.02.20

VISIT [WWW.EVERBRIDGE.COM](http://WWW.EVERBRIDGE.COM)

CALL +1-818-230-9700



## Understand who and what is at risk and who can respond.

Depending on your business, your organization may need to be aware of threats to some or all of these types of assets. JARVISS features the industry-leading ability to define assets that are points, lines, or polygons, as well as support for moving assets (like travelers) and temporary assets (like a offsite holiday party or sporting event).

Gain understanding of who and what is at risk and who can help instantly – the moment you select an alert to see details, you are presented with asset and incident information.



PERSONNEL



INSTALLATIONS



STAND ALONE FACILITIES (SAFs)



OFFSITE SPECIAL EVENTS



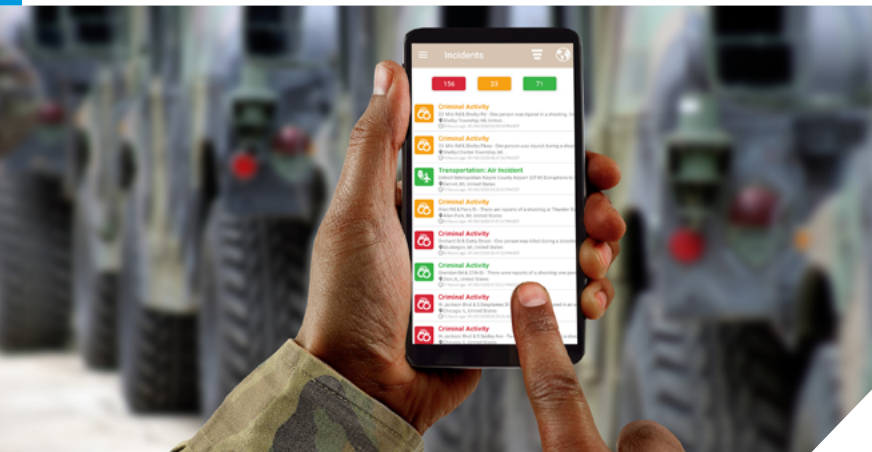
TRAVELERS



INFRASTRUCTURE



ROADS



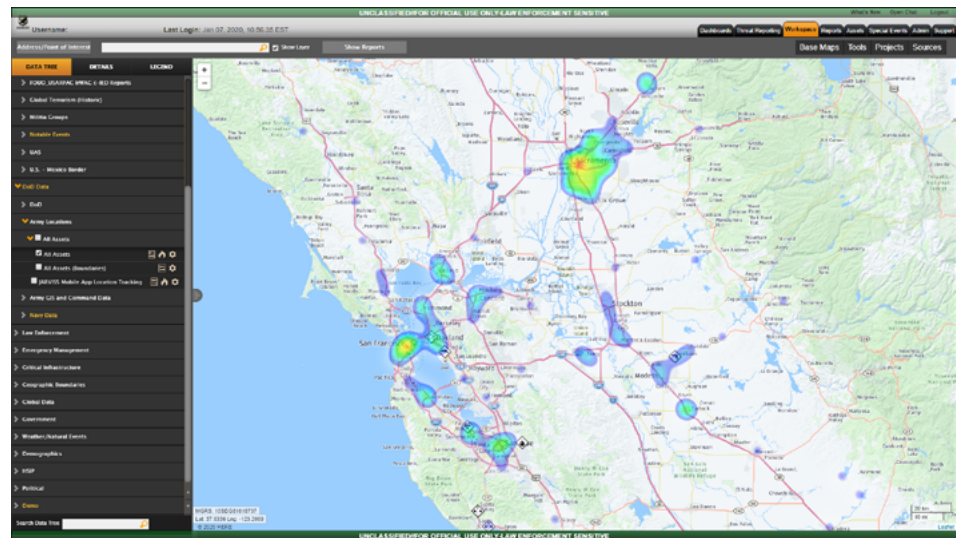


## Gain context for any risk situation.

Threat events don't happen in a vacuum. The area and conditions in which an event occurs can affect the event and your response. Gain insight into current weather conditions, traffic flow, posts to social media, and the location of local police, fire, and hospitals while you respond. Identify evacuation routes, shelters, and critical infrastructure.

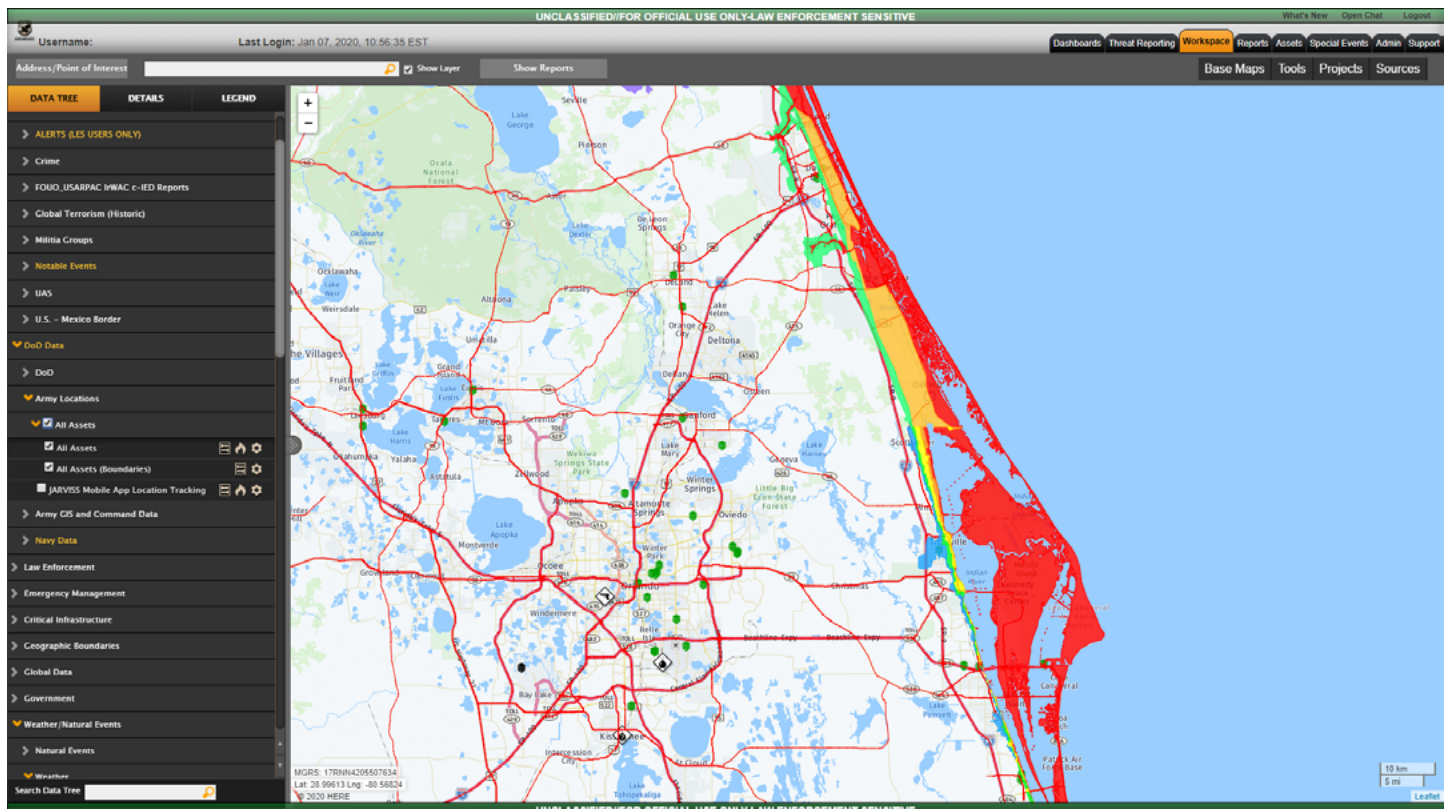


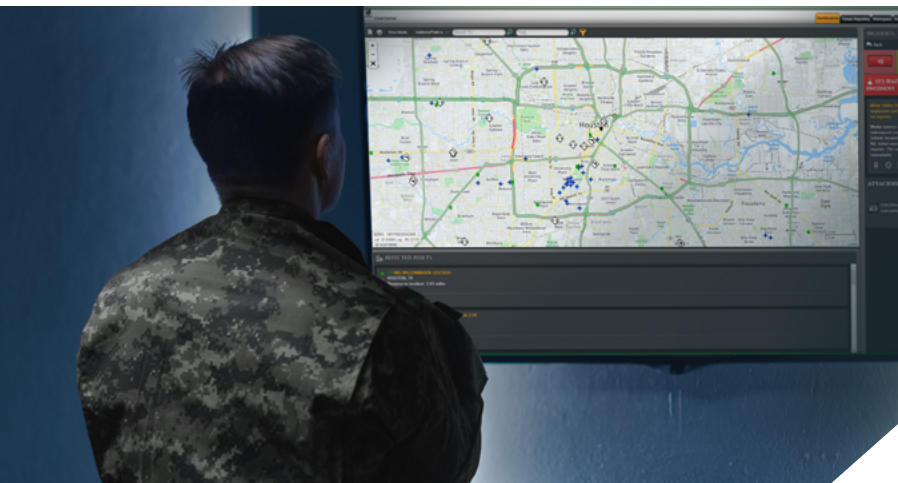
JARVISS offers dozens of contextual data layers that can help you shape an appropriate response based on real-time conditions. You can also incorporate your own contextual information by importing map layers from other sources.



## Take action to protect your interests.

Once you understand the event, the potential impact, and relevant context, you can take action. Communicate with persons at risk, responders, stakeholders, and those with a need to know.





## Easily integrate external and internal data.

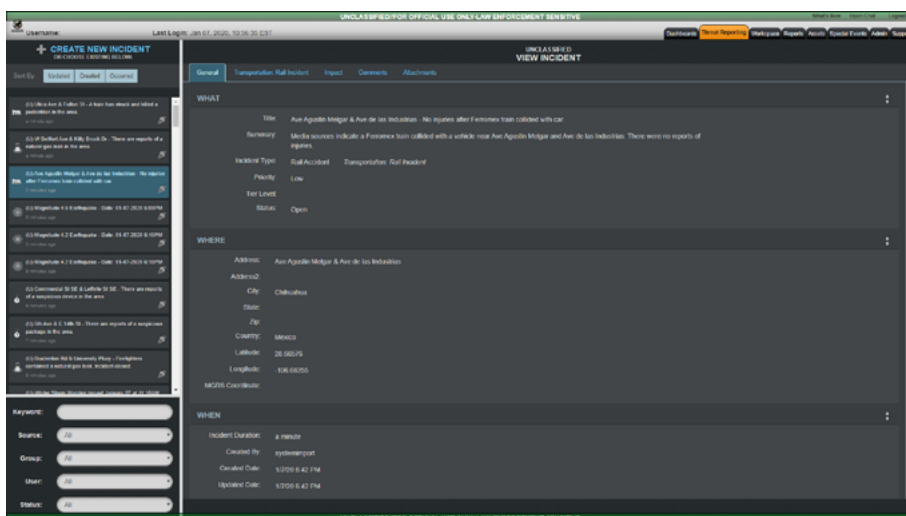
A common operating picture would not be complete without the data that is unique to your organization. Everbridge enables you to incorporate threat event data into JARVISS that's relevant to your organization.

## Secure, scalable, and highly available.

JARVISS is a secure U.S. Federal Government SaaS solution that helps customers keep employees safe and operations running.

Some of the benefits include:

- No on premise infrastructure or servers to maintain
- Adheres to the highest security and compliance requirements for DoD operations
- Grows with your organization without worrying about limits
- Operations staffed 24x7 to monitor the solution



## Let's Chat

Do you have questions? Would you like to know more about JARVISS? **Get in touch or just call us at +1-818-230-9700 to learn more.**

## ABOUT EVERBRIDGE

Everbridge, Inc. (NASDAQ: EVBG) is the global leader in critical event management and enterprise safety software applications that automate and accelerate an organization's operational response to critical events in order to keep people safe and businesses running. Everbridge is based in Boston and Los Angeles with additional offices in Lansing, San Francisco, Beijing, Kolkata, London, Oslo, Singapore, and Stockholm.



DS\_JARVISS\_2020.02.20

VISIT [WWW.EVERBRIDGE.COM](http://WWW.EVERBRIDGE.COM)

CALL +1-818-230-9700