

# Super Bowl 2019: Atlanta

**LOCATION**

Atlanta, Georgia, USA

**DATE**

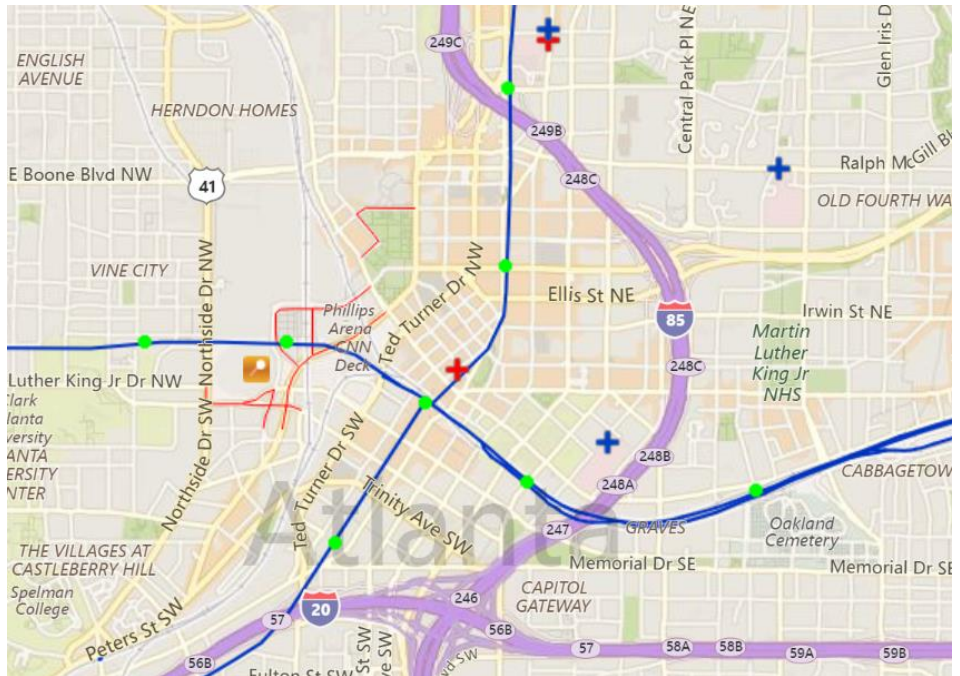
February 3, 2019

**ANALYSIS BY**

Everbridge

## Summary

The Super Bowl LIII game will take place at Mercedes-Benz Stadium in Atlanta, Georgia, the evening of February 3, 2019. Officials have stated that the recent government shutdown will not affect security preparations for the event; hundreds of officers from dozens of local and federal government agencies are coordinating to mitigate against any possible threat. Officials are not releasing many of the details of the security plan but have announced they are ready for the estimated 1 million visitors expected to attend. Street closures around the stadium began on January 21 and are planned to continue through February 7. At least three small groups have announced plans to demonstrate, both at the stadium and in the greater Atlanta area, on Super Bowl weekend, a police presence is likely at each event to mitigate possible clashes between rival protesters.



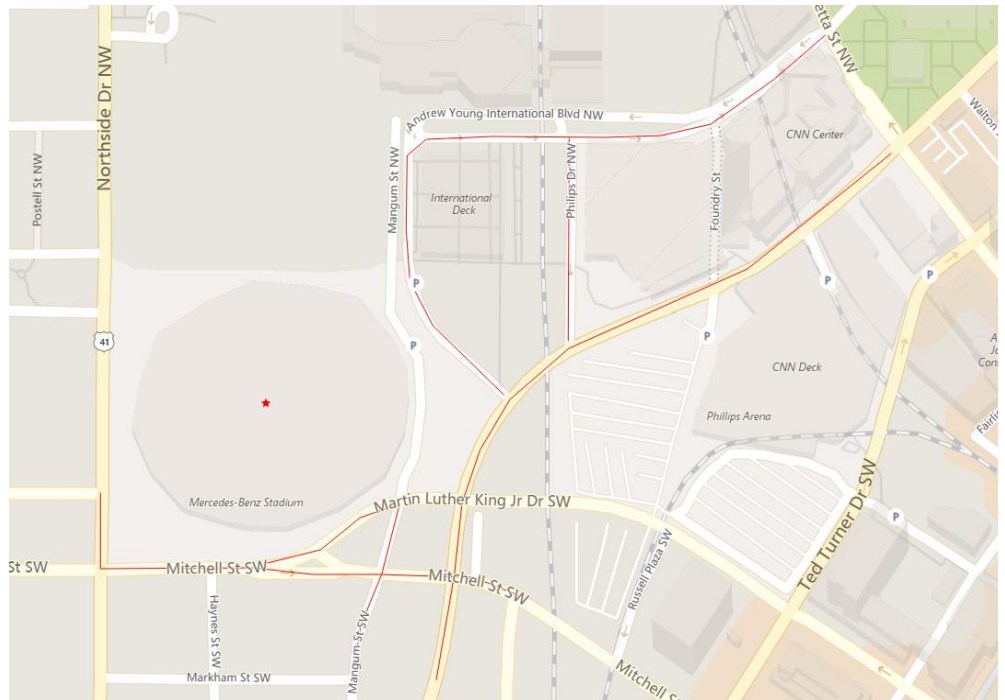
*The immediate area around Mercedes-Benz Stadium (orange dot). Road closures (red lines), MARTA rail stations (green), MARTA rail lines (blue), blood banks (red crosses), and hospitals (blue crosses).*

## Immediate Area

Street closures began the morning of January 21, and more are planned to take place in the 10 days leading up to the game. The Metropolitan Atlanta Rapid Transit Authority (MARTA), which operates both bus and light rail transit throughout Atlanta, has not announced any planned reduction in operations, and will reportedly run on a 24-hour schedule during the event.

Beginning on January 21, Mitchell Street SW was closed from MLK Jr. Drive to Elliot Street SW. Mangum Street SW was closed from Markham Street to Foundry Street. MLK Jr. Drive was closed between Northside Drive NW and Centennial Olympic Park Drive NW. Baker Street was closed between Luckie Street NW and Centennial Olympic Park Drive NW. These closures are scheduled to be in place through February 7.

As of January 23, Andrew Young International Boulevard NW was closed between Marietta Street NW and Centennial Olympic Park Drive. These closures are also expected to last through February 7. Additionally, starting on January 26, one lane of Northside Drive NW is set to be closed for police activity near the Stadium, this closure is scheduled to be in place until February 2. Between February 2 and February 4, Northside Drive NW is set to be closed between MLK Jr. Drive SW and Ivan Allen Jr. Boulevard.



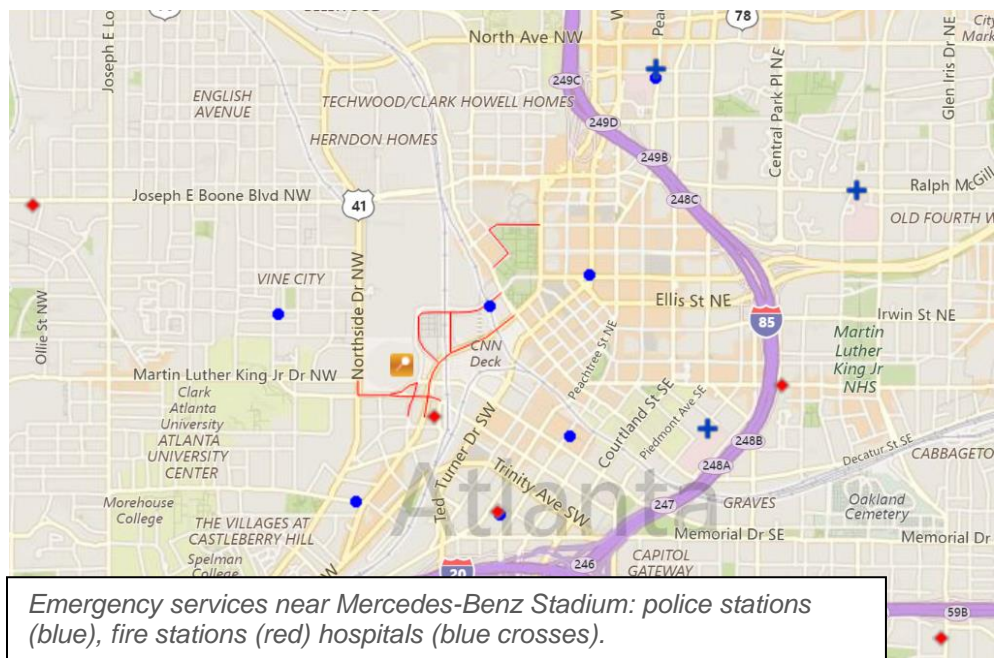
*Road closures in red around the Mercedes-Benz stadium (red star); closures are going into effect on a rolling basis and are scheduled to remain in place until Feb. 7*

There are also street closures planned near the Fox Theatre due to Super Bowl-related activities.

Between February 1 and February 3, Peachtree Street between 3<sup>rd</sup> Street and Ponce De Leon Avenue, Ponce de Leon Avenue between Peachtree Street and West Peachtree Street, and 3<sup>rd</sup> Street between Peachtree Street and West Peachtree Street, are scheduled to be closed.

## Security

Although the FBI has stated that no threats have been made against the Super Bowl, security at such a large event will be high. Multiple law enforcement agencies have partnered to coordinate on security for the event. Media sources report that elements of the FBI, Secret Service, and Federal Emergency Management Agency (FEMA), are working with members of the Georgia State Police, the Georgia Bureau of Investigation, the Georgia World Congress Center Authority Police, and the Georgia Emergency Management, as well as Atlanta Fire and Police forces, and the Fulton County Sheriff's Office. Homeland



*Emergency services near Mercedes-Benz Stadium: police stations (blue), fire stations (red) hospitals (blue crosses).*



Security officials have stated that the recent government shutdown will not impact security at the event.

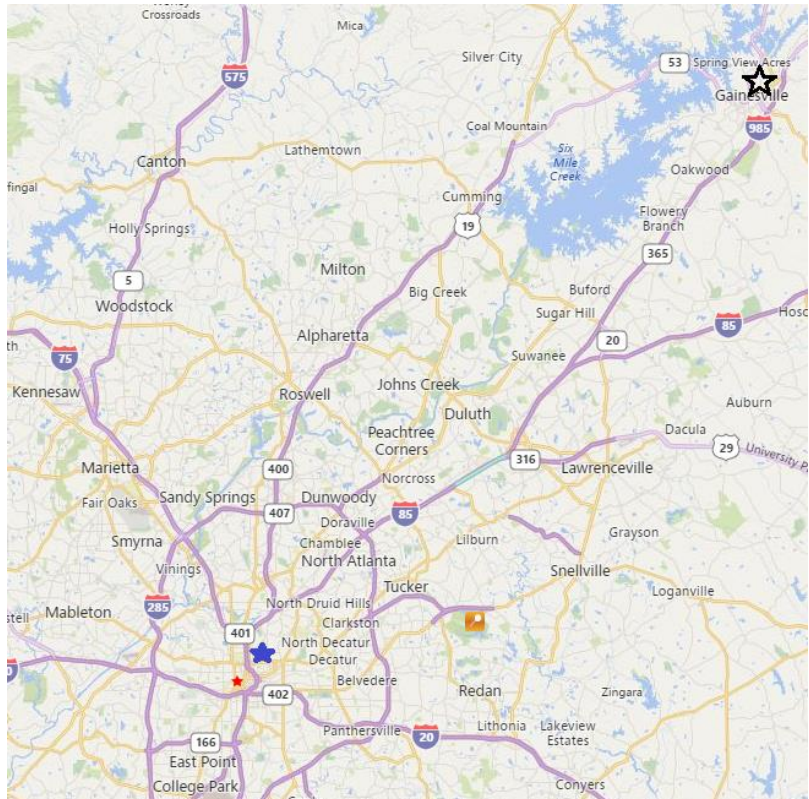
Atlanta Police are not releasing exact numbers but have stated that all officers are working 12 hour shifts between January 26 through February 5. Law enforcement will operate a command center in constant communication with 13 others law enforcement stations in the area around the stadium, monitoring for any suspicious activity, suspicious packages, public demonstrations, or anything else that may disrupt the event. Hundreds of security cameras, as well as a high presence of uniformed and plain-clothed officers, will monitor crowds before, during, and after the game. Officers with K9 units will be patrolling the area before, during, and after the event. Officials from the Department of Homeland Security (DHS) have stated that 550 DHS personnel have been assigned to the Super Bowl and federal resources such helicopters and search and rescue teams, can be deployed on short notice if needed.

## Anticipated disruptions/protests

Members of the “pro-white” Rock Stone Mountain (RSM) white nationalist group plan to gather at 3:00 pm on February 2 at 1000 Robert E. Lee Boulevard in Stone Mountain, GA, to rally in support of “Rock Stone Mountain II”, a Confederate statue, as well as to protest against the “Marxist media” and “communism”. The group is associated with the far-right group “League of the South” and likely to draw counter protesters. The RSM event on February 2 has attracted limited attention on social media and is unlikely to draw more than a dozen participants.

Counter protesters with the far-left group Antifa have announced plans to rally against the Rock Stone Mountain group on February 2. The two groups of protesters are likely to gather near each other and shout. However, the police are expected to deploy personal to keep the groups separate and prevent clashes. Scuffles and arrests are likely, though these are likely to be contained to the immediate area and unlikely to last into February 3 or impact the Super Bowl.

The anti-LGBT group Westboro Baptist Church reportedly plans to protest outside of several churches in Gainesville, GA, the morning of February 3: First Baptist Gainesville, St. John Baptist, First Presbyterian, St. Michael R.C., Grace Episcopal, and Good Shepherd Lutheran. Protests by this group are usually small but sometimes prompt large counter-protests. Counter-protesters and scuffles are possible at any of the church protests. The group also plans to



*Planned protests: Westboro Baptist (black star), NAACP (blue star), Rock Stone Mountain (orange pin), and Mercedes-Benz Stadium (red star).*

protest outside the Mercedes-Benz Stadium between 3:00 and 5:00 pm on February 3. The police are expected to prevent any significant clashes, though scuffles are possible, particularly at the stadium where the rally will draw greater attention.

The NAACP and other civil rights groups plan to hold a march on February 2 around noon in Piedmont Park in Atlanta to protest against racism and inequality. It is unclear how many people plan to participate, though numbers are expected to remain fairly small. Counter-protesters by white nationalist groups are possible, but clashes are unlikely. The police are likely to maintain a presence nearby to mitigate any potential clashes or disruptions.

An anti-circumcision group also plans to protest February 2 and 3 in Atlanta. The February 2 protest is scheduled to occur at the intersection of Centennial Olympic Park Drive and Marietta Street, between 10:30 am and 6:00 pm; the February 3 protest is scheduled to take place near the Mercedes-Benz Stadium, across from the Georgia International Plaza, between 10:30 am and 6:00 pm. The protests have attracted little attention or support on social media and are likely to only involve a few protesters. Clashes or counter-protesters are unlikely.